

## CAROL SALLOWAY, MCC, MBA

Carol Salloway, Founder of Performa Consulting Group, is an accomplished Executive Coach and Leadership Development Consultant. In 2022, she earned the Master Coach Certification (MCC) from the International Coaching Federation, an honor achieved by fewer than 5% of coaches globally.

Known for her warm, insightful, and direct approach, Carol empowers her clients to get clear on what they want, strengthen their leadership brand, enhance their influence, and deliver impressive results.

With over 20 years of leadership development experience, Carol has deeply honed her coaching expertise. Carol's previous line management and extensive management consulting background enables her to bring a deep understanding of organizational and business dynamics to her coaching work.

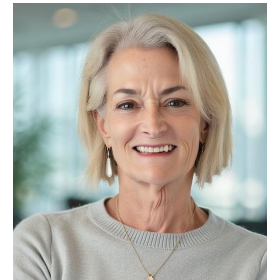
Carol has coached hundreds of leaders dedicated to accelerating their growth. Her clients span knowledge-based industries such as life sciences, healthcare, technology, financial services, higher education, professional services, and nonprofit organizations.

She is certified in the use of top-tier leadership assessment tools, enabling her clients to uncover hidden motivations, beliefs, and patterns that shape their decision-making. By illuminating these "invisible" drivers, she helps expand their options, enhance their behaviors, and unlock new possibilities. Her coaching incorporates cutting-edge insights from neuroscience, emotional intelligence, and executive presence.

Carol serves as a Master Coach Supervisor in the Graduate College of Executive Coaching at William James College. She recently served on the Board of the International Coach Federation – New England chapter.

Passionate about giving back, Carol is an Executive Coach with the Gratitude Network, which supports innovative social entrepreneurs tackling critical issues affecting children and education worldwide.

Carol holds an MBA with a concentration in Organizational Behavior from Boston University and a BA in Psychology from Simmons College. She completed her professional coaching certification through New Ventures West and is a certified Neuro-Transformational Coach (CNTC).



### Assessment Certifications

#### *Leadership 360 Assessments:*

- Benchmarks® for Managers™
- Leadership Agility®
- Leadership Effectiveness Analysis™
- Leadership Versatility Index

#### *Personality and Self Assessments:*

- Enneagram
- Hogan Leadership Suite
- Myers-Briggs Type Indicator®

#### *Emotional Intelligence Assessments:*

- EQ in Action
- Emotional Quotient Inventory
- Team Emotional Intelligence

#### *Other Certifications:*

- Neuro-Transformational Coach
- Immunity to Change™
- The Results Accelerator™
- Managing your Leadership Brand™